



Co-funded by the European Union



European Reintegration Network (ERIN) – Sharing Operational Experiences

EMN German Conference

Return Counselling – Integrated Return Management –
Reintegration

Panel III: Reintegration – Challenges and Best Practices

Ms. Po-Ling Ho, ERIN Program Manager

Introduction ERIN

- EU program with focus on joint implementation of reintegration assistance after return
- European approach: one window for reintegration
- Both voluntary and non-voluntary returnees eligible
- One service contract closed with NGO/ IGO (*service provider*) in each target country
- Wide range of counselling, referral and reintegration services included



Who and where - ERIN

- In total 18 partners: 17 European countries plus Australia
- Operational in 20 third countries, including AFG, BGD, IRQ, MAR, NGA and PAK
- Additional third countries (11), including SOM, LBY and ETH
- In cooperation with IOM, Caritas and local NGOs



ERIN Monitoring Missions

- On the basis of ERIN Monitoring Missions Somaliland and Sri Lanka
- What does ERIN do during a Monitoring Mission?
 - ✓ Meetings with ERIN Service Provider and local partners
 - ✓ Meetings with government officials
 - ✓ Meetings with EU-delegation and EU embassies
 - ✓ Interviews with ERIN returnees



Monitoring Mission - Somaliland





Experiences and Impressions

➤ *Perspective government:*

- Recognition; benefit from development aid
- Reluctant to cooperate on return
- Positive developments after ERIN mission

➤ *Perspective returnees:*

- High unemployment rate; reintegration is challenging
- Returnees well informed on ERIN prior to return

➤ *Perspective ERIN delegation:*

- Many returned from abroad; there are perspectives
- Reintegration components in place



Monitoring Mission – Sri Lanka





Experiences and Impressions

➤ *Perspective government:*

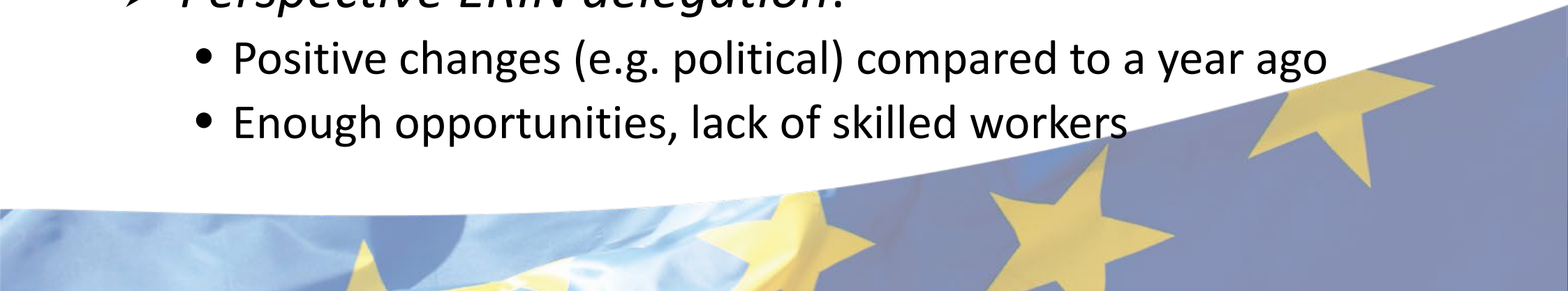
- Focus on reconciliation and development, not return and reintegration
- Positive feedback on ERIN; willing to assist in returns

➤ *Perspective returnees:*

- Unexpected positive developments in Sri Lanka
- Feedback UK <-> FR returnees differ; equally well-informed

➤ *Perspective ERIN delegation:*

- Positive changes (e.g. political) compared to a year ago
- Enough opportunities, lack of skilled workers



Q&As

Thank you for your attention.

Any questions?

ERIN Program Management Unit

Ms. Po-Ling HO

ERIN@dtv.minvenj.nl

