



Federal Office
for Migration
and Refugees

Remit and Focus Areas

Federal Office for Migration and Refugees

ENGLISCH

Table of Contents

Introduction	5
The Authority	7
Implementation of the Asylum Procedure and Asylum Application Decisions	9
Procedure Management and Quality Assurance	11
Humanitarian Reception Procedure	13
Migration and Residence	15
Promotion and Coordination of Integration	17
Return	19
Cooperation with Security Authorities	21
International Cooperation	23
Information Centre for Asylum and Migration	25
Research Centre for Migration, Integration and Asylum	27
Data Collection and Management	29
Digitalisation	31
Service Centre	33





Dear Readers,

The Federal Office for Migration and Refugees is the centre of excellence for asylum, migration and integration in Germany. We have a wide-ranging remit: we handle tasks that are naturally associated with us, such as the asylum procedure and integration. At the same time, we are responsible for other tasks that are less firmly embedded in the public consciousness but are just as socially important or are essential for the Federal Office for Migration and Refugees to function.

We present this varied remit to you in this brochure. Obviously, there is not enough space here to cover every single area of activity. Instead, we have chosen to focus on the tasks for which we have a legal mandate, which have an external effect and which we believe best represent the wealth of topics covered in all of the various areas.

If you are also interested in our other activities, please visit our website www.bamf.de. In addition, you will find a link to more information in each section of this brochure.



Dr. Hans-Eckhard Sommer

President of the Federal Office for Migration and Refugees





The Authority

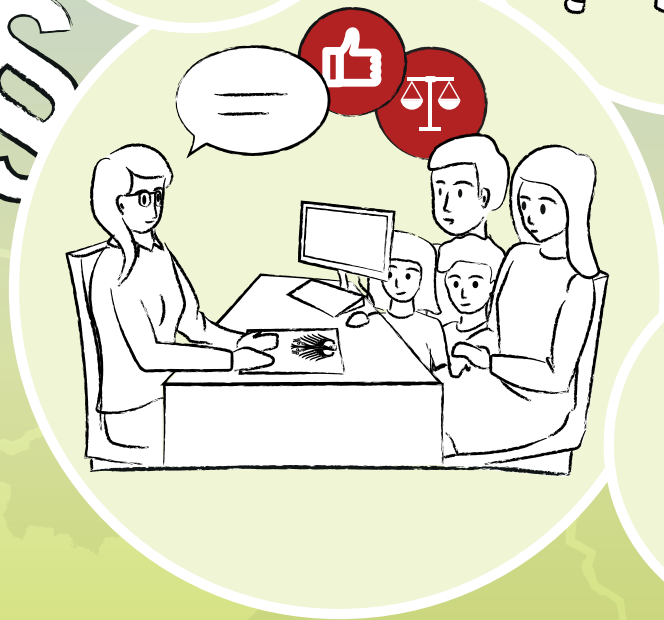
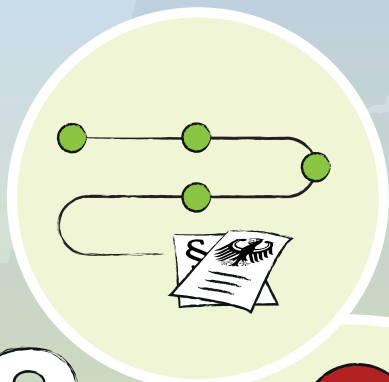
The Federal Office for Migration and Refugees is a higher federal authority within the portfolio of the Federal Ministry of the Interior, Building and Community (BMI). Its headquarters are in Nuremberg, where its central administration and specialist departments are located. Many of these support operational activities – the asylum procedure and integration work in the branch offices.

The asylum, integration and migration task areas constitute the authority's core elements. In order for each division to perform its tasks well, the Federal Office for Migration and Refugees has decentralised locations all over Germany that function as either primary branch offices, branch offices within

arrival, decision-making and return (AnKER) facilities or arrival centres. These locations are where asylum procedures are implemented. Some decentralised locations, known as regional offices, are responsible for the integration work on the ground. This enables close cooperation in both areas with the Länder and also with non-state players in refugee protection and integration work.

For more information on the Federal Office for Migration and Refugees, please visit www.bamf.de





Implementation of the Asylum Procedure and Asylum Application Decisions

Asylum seekers have the right to an asylum procedure. In Germany, the Federal Office for Migration and Refugees implements the asylum procedure and decides on asylum applications. Its decisions are based on the Asylum Act (Asylgesetz), the Residence Act (Aufenthaltsgesetz) and European directives and regulations. The preconditions for granting international protection (refugee and subsidiary protection), the existence of political persecution as defined by the Basic Law (Grundgesetz, right of asylum) and bans on deportation are examined within the asylum procedure.

At the Federal Office for Migration and Refugees, the task of implementing fair, efficient asylum procedures falls to the decision-makers. The particular life situation of the applicant is a significant factor in examining and deciding on each asylum application. Asylum seekers can present the reasons for their escape at what is called a hearing. Decision-makers must have comprehensive, up-to-date knowledge of asylum and residence law and about the country of origin in order to carry out their demanding role.

Asylum seekers cannot freely select the country in which the asylum procedure is to be carried out. The Dublin procedure sets out which European country is responsible for examining an asylum application. This is intended to ensure that each application is only examined by one country.

For information on the stages of the German asylum procedure, please visit www.bamf.de/asyl-fluechtlingsschutz





Procedure Management and Quality Assurance

Ongoing management and quality assurance as well as good cooperation with all relevant Länder authorities is needed to implement the asylum procedure consistently and in accordance with legal requirements. Thanks to its decentralised structure, the Federal Office for Migration and Refugees is represented in every federal state.

Procedure management is ensured through instruments such as official instructions and decision-making aids that are used to evaluate the situation in the countries of origin. These guarantee consistent decision-making practice across the country. However, they never replace an individual examination and assessment of each asylum application.

Quality assurance covers all stages of the procedure, from the application for asylum to notification of the decision. A system of double checking is used for quality control of hearings and decisions. In addition, randomly selected procedures are subjected to further quality checks by the central Quality Assurance Department.

Identity management

The Federal Office has introduced digital assistance systems for establishing asylum seekers' identities. Examples include systems for image and voice biometrics, name transliteration and analysis, and evaluation of mobile data carriers. These provide decision-makers with additional information that can help them to examine the statements made by asylum seekers.

For information on the stages of the German asylum procedure, please visit www.bamf.de/asyl-fluechtlingsschutz





avia ou
servi

REFLECTION

Humanitarian Reception Procedure

There are various reception and redistribution procedures for vulnerable persons who have fled their country of origin due to war or persecution. The Federal Office for Migration and Refugees is responsible for their implementation.

Humanitarian reception

In the humanitarian reception procedure, people are received in Germany who have fled their country of origin because of a crisis situation and are unable to return there in either the short or long term.

Resettlement

Resettlement is the permanent reception of especially vulnerable persons from a third country in which they have initially sought protection but where they have no prospects of either becoming integrated or returning to their home country. The number of people received depends on the current humanitarian and political situation. As a rule, displaced persons to be received are proposed by the UNHCR.

Relocation

Asylum-seekers are redistributed via the so-called relocation procedure from EU Member States whose asylum systems are under particular pressure to other Member States. This is intended to ensure that refugees are distributed equitably across Europe.

For more information, please visit www.bamf.de/aufnahme





Migration and Residence

In addition to EU citizens, nationals from third countries also have the opportunity to enter Germany in order to live and work here if certain conditions are met. This is based on German residence law and EU law.

In this area, the Federal Office for Migration and Refugees is the point of contact for immigration authorities and cooperates with numerous bodies in Germany and abroad. As the National Contact Point, it enables students, skilled workers and persons entitled to a long-term residence permit to exercise EU mobility rights. It also approves the issuance of travel documents for foreigners abroad and can grant exceptions to the passport obligation.

The Federal Office for Migration and Refugees also has a legal mandate to coordinate with various state actors on the exchange of information on residence for the purpose of employment.

The authority operates the Working and Living in Germany (ALiD) hotline jointly with the Federal Employment Agency. This can be used by foreign professionals, students, trainees, university graduates, and companies and authorities to get answers to their questions on topics such as the recognition of foreign qualifications, entry and residence, job search and language courses. The hotline is open Monday to Friday and can be reached at **+49 30 1815-1111**.

For more information, please visit www.bamf.de/migration





Promotion and Coordination of Integration

The Federal Office for Migration and Refugees is responsible for measures for the linguistic, social and vocational integration of migrants in Germany. The aim of these measures is to integrate into society all people living permanently and lawfully in Germany.

To this end, the Federal Office for Migration and Refugees has developed the Gesamtprogramm Sprache (GPS) or Comprehensive Language Programme, consisting of **integration courses and professional language courses**. It coordinates and reviews implementation of the courses, thereby ensuring that as many people as possible are quickly offered a suitable course.

The types of courses offered by the Comprehensive Language Programme range from literacy courses as part of the integration courses through to courses for medical doctors within a professional language course. In addition to the German language, the integration courses also cover the German legal system and German history and culture.

Adult immigrants requiring individual advice with regard to their particular situation can also turn to the **Immigration Counselling Service**.

Furthermore, the Federal Office for Migration and Refugees promotes **social and professional integration projects** that help to strengthen immigrants' skills and make it possible for them to participate in social life on equal terms and establish a culture of mutual recognition.

For more on our integration remit and projects, please visit www.bamf.de/integration





Return

The promotion of voluntary return and reintegration into the country of origin is a key migration policy management tool for the federal government. The Federal Office for Migration and Refugees coordinates and participates in programs and projects aimed at promoting voluntary return and manages the implementation of the programs in up to 100 countries.

The **REAG/GARP humanitarian assistance program** (Reintegration and Emigration Program for Asylum-Seekers in Germany/Government-Assisted Repatriation Program) has been helping returnees for more than 40 years by funding travel grants, meeting transport costs and providing start-up assistance in the country of origin.

Voluntary return can only take place on the basis of comprehensive advice. Migrants interested in returning can get answers to general questions on this by contacting the Federal Office's **return hotline at +49 911 943-0**. The **ReturningfromGermany information portal** offers comprehensive information on voluntary return and reintegration to those interested and to return counselling centres. These centres inform and support persons interested in a voluntary return and reintegration into their country of origin. Since 2019, the Federal Office has also been tasked with the **procurement of passport replacement documents**. To provide administrative assistance to the Länder, the Federal Office works with the Federal Police to organise travel documents for persons who are obliged to leave the country but do not have passports.

For a good overview, see www.bamf.de/rueckkehr and www.ReturningfromGermany.de





Cooperation with Security Authorities

The Federal Office for Migration and Refugees is a key pillar of Germany's security architecture. Security authorities at federal and state level work closely and in confidence with the Federal Office for Migration and Refugees. A constant flow of information is maintained to ensure that individuals who pose a risk to Germany and/or public safety are identified at the earliest possible stage and that the possibilities of asylum and residence law can be used as public security law. The Federal Office for Migration and Refugees also plays a key role in connection with victim and witness protection and in the prosecution of offenders. Thus, most official investigations into war crimes are now based on guidelines from the Federal Office for Migration and Refugees.

Prevention

An integrated approach to combating terrorism also involves suitable exit programmes and advice to persons associated with radical Islamist persons. With its **Advice Centre on Radicalisation** and hotline, the Federal Office for Migration and Refugees has been an established nationwide contact point for deradicalisation and prevention since 2012. The advice centre functions as a central interface within the Länder's official and civic structures and works closely with this network. It can be reached on work days at **+49 911 943-43 43**.

For more information, please visit www.bamf.de/sicherheit and www.beratungsstelle-radikalisierung.de





International Cooperation

Much asylum and migration policy is influenced by the European Union, and asylum law is already harmonised across Europe. As a specialist authority and centre of excellence for asylum and migration, the Federal Office for Migration and Refugees actively contributes to the shaping and implementation of such policy at national and European level. It works closely with partner authorities and conducts projects within the context of international cooperation.

The authority operates as the **National Contact Point for the European Asylum Support Office (EASO)**. This aims to improve the implementation of the Common European Asylum System (CEAS) and sends staff to Member States of the European Union facing a disproportionate burden in order to support the implementation of asylum procedures.

The Federal Office for Migration and Refugees is also responsible for administering the **European Asylum, Migration and Integration Fund (AMIF)**. Its resources are used to support measures in the areas of asylum, (legal) migration, integration, return and the prevention of irregular migration.

The Federal Office for Migration and Refugees is the **National Contact Point of the European Migration Network (EMN)** and a member of the network of heads of European asylum and migration authorities. The authority also cooperates closely with international organisations such as the UNHCR and IOM.

For further information, please visit www.bamf.de/international
European Migration Network www.bamf.de/emn





Information Centre for Asylum and Migration

The Information Centre for Asylum and Migration (IZAM) is the central specialised information unit of the Federal Office for Migration and Refugees. The Information Centre compiles reliable, comprehensive and up-to-date information on migrants' countries of origin and transit, as well as on global refugee and migration situations and their causes. It evaluates literature and media reports on integration, asylum and residence law, regional geography and human rights, while sources for migration research are also assessed.

The Information Centre for Asylum and Migration is divided into a library, documentation areas and country analysis units.

A team of librarians, documentalists, lawyers, political scientists and other scientific personnel collects and processes the information. Liaison staff support it by inputting their experience from the relevant Länder.

The Information Centre for Asylum and Migration makes its databases and its collected information available via the **MIlo** (Migrations-InfoLogistik) information system to staff of the Federal Office and external users.

For more information, please visit www.bamf.de/izam



Illegale Drittstaatsangehörigen in Deutschland

Fokusstudie der deutschen nationalen Kontaktstelle für das Europäische Migrationsnetzwerk (EMN)

Working Paper 74



Bundesamt
für Migration
und Flüchtlinge



Arbeitsmarktintegration von Drittstaatsangehörigen in Deutschland

Studie der deutschen nationalen Kontaktstelle
für das Europäische Migrationsnetzwerk (EMN)

Working Paper 82

Julian Tangermann / Janne Grote



Forschung



Kooperationsstelle der
Europäischen Union

Entwicklung Kontext von für das Europäische Migrationsnetzwerk (EMN)

Studie der deutschen nationalen Kontaktstelle
für das Europäische Migrationsnetzwerk (EMN)

Working Paper 83

Paula Hoffmeyer-Zönig

Working Paper 72



Deutsche
Basis-
Konferenz

...ime leben in and?

...rechnung über die Anzahl der Migrantinnen in Deutschland
Stand 31. Dezember 2015
Im Auftrag der Deutschen Islam Konferenz

Working Paper 71

Von Anja Stach



Forschung

...nige Personen in
and

Repräsentative Untersuchung
in Deutschland 2015

BAMF-
Befragung von
Geflüchteten 2015

...sergebnisse sowie Analysen





Research Centre for Migration, Integration and Asylum

The Research Centre of the Federal Office for Migration and Refugees pursues an interdisciplinary approach and conducts research projects on migration, integration, asylum, return and reintegration. Through its work, it provides data and knowledge on managing migration and integration situations and administrative practice in Germany.

The terms of reference of the research that is carried out at the Federal Office can be summarised under the terms analysis, evaluation and advice. In line with the core tasks of the authority, priority is given to studying the impact of migration processes on society. The Research Centre also supports the process of the integration of people into Germany and contributes to the further development of integration measures and programmes that promote return and reintegration.

The Research Centre works with academic institutions in Germany and abroad. It is also responsible for the preparation of scientific studies within the framework of the European Migration Network (EMN). The EMN provides the Member States and institutions of the European Union with scientifically objective, reliable and comparable information on migration and asylum.

For research findings and current projects, please visit
www.bamf.de/forschung





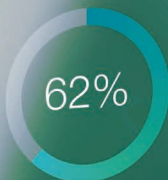
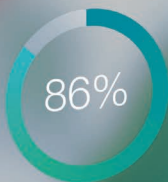
1. **Einleitung**
Die vorliegende Studie untersucht die Auswirkungen der Digitalisierung auf den Arbeitsmarkt. Es wird analysiert, inwieweit die Automatisierung von Routineaufgaben zu Arbeitsplatzverlusten führt oder ob neue Arbeitsplätze geschaffen werden. Die Studie basiert auf einer Analyse von Daten aus den letzten fünf Jahren.

2. **Ziele und Methodik**
Ziel der Studie ist es, die Nettoeffekte der Digitalisierung auf den Arbeitsmarkt zu ermitteln. Die Methodik umfasst eine Literaturrecherche, die Analyse von Statistiken und die Durchführung von Interviews mit Experten.

3. **Ergebnisse**
Die Ergebnisse zeigen, dass die Digitalisierung zu einer Verschiebung der Arbeitsplätze führt. Während Routineaufgaben automatisiert werden, entstehen neue Arbeitsplätze in den Bereichen Entwicklung, Wartung und Support. Die Nettoeffekte sind positiv, da die Schaffung neuer Arbeitsplätze die Verluste übersteigt.

4. **Schlussfolgerungen**
Die Digitalisierung ist ein Prozess, der nicht gestoppt werden kann. Es ist wichtig, die Arbeitskräfte für die neuen Anforderungen auszubilden und zu qualifizieren. Die Politik sollte Maßnahmen ergreifen, um die Arbeitslosenquote zu senken und die soziale Gerechtigkeit zu gewährleisten.

5. **Quellen**
Die Studie basiert auf folgenden Quellen:
- Statistisches Bundesamt
- OECD
- ILO
- Experteninterviews



Data Collection and Management

Collection and processing of statistical data

Statistical data of relevance to asylum, migration and integration policy are collected, processed and evaluated in the Federal Office for Migration and Refugees.

The authority regards itself as not only a provider of numbers, but as a service point for federal and state authorities and for the European statistical office EUROSTAT. Through its advice on fundamental statistical issues and their further development, it makes a major contribution towards security, policy advice and fact-based debate on asylum, migration and integration.

Central Register of Foreign Nationals as a central data management system

As the centre of excellence for migration, integration and asylum, the Federal Office for Migration and Refugees has been named the lead registration authority for the Central Register of Foreign Nationals (AZR). This is one of the largest automated registers in Germany's public administration. As a central database for sensitive, personal data of persons without German nationality, the AZR helps German and European authorities to perform their statutory duties in areas such as asylum, residence, integration, return and security. The authority ensures the reliability of the data in the AZR and compliance with protection mechanisms under data protection law with regard to the storage, transfer and use of the data.

Further information: www.bamf.de/datenerhebung





Digitalisation

In fulfilling its varied remit, the Federal Office for Migration and Refugees must not only be effective but also meet very high quality standards. This poses particular challenges for all involved. Process digitalisation helps in this and is therefore more than just the introduction of new technologies – it is an essential part of the professional success of the Federal Office for Migration and Refugees.

The Digitalisation Agenda 2020 was the starting signal for a multitude of projects and made the Federal Office for Migration and Refugees a modern, digital authority. This is underlined by the numerous awards that various innovative IT projects have already won. In particular, processing times for asylum procedures have been significantly reduced, access to integration and language courses is now faster and interfaces for exchanging data with other authorities have been improved.

With its Digitalisation Agenda, the Federal Office for Migration and Refugees also sees itself as a pioneer and source of inspiration for other authorities, both nationally and internationally, in the long term. Its focus is on projects that offer the greatest technical benefits, such as establishing the identity of asylum applicants and digitalising documents.

For more information, please visit www.bamf.de/digitalisierung





Service Centre

As a higher federal authority, the Federal Office for Migration and Refugees is obliged to make its specific findings and knowledge on matters of asylum and migration available to the public.

The Service Centre provides a direct line for this. It answers queries received by phone and in writing from citizens, authorities, students, researchers, organisations and actors in the area of integration and migration on all topics of relevance to the Federal Office, such as integration courses, residence law and naturalisation. In addition to a general citizens' service, it also runs a service that responds to queries from authorities involved in the asylum process who need information on ongoing and completed procedures.

The Service Centre can be reached Mondays to Fridays at **+49 911 943-0**. Queries can also be emailed at any time to **service@bamf.bund.de**.

Other service points are the Return hotline (p. 19), the Working and Living in Germany hotline (p. 15) and the Advice Centre on Radicalisation (p. 21).

The Federal Office for Migration and Refugees provides up-to-date and reliable information at www.bamf.de



Imprint

Published by:

Bundesamt für Migration und Flüchtlinge
90461 Nürnberg

Valid as of:

12/2020

Printed by:

Bonifatius GmbH, Paderborn

Design:

Bundesamt für Migration und Flüchtlinge, Nürnberg

Picture credits:

iStock: Rawpixel, NicoEINino, Drazen Zigic, Greyfebruary, _marqs, FlairImages, piranka;
Bundesamt für Migration und Flüchtlinge, Peter Roggenthin, Francisco Lopez

Reference source:

Publikationsstelle Bundesamt für Migration und Flüchtlinge
www.bamf.de/publikationen

You can also download this publication as an accessible PDF document from:
herunterladen unter: www.bamf.de/publikationen

This document has been published by the Federal Office for Migration and Refugees as part of its public relation work. It is distributed free of charge and is not for sale.



Visit us at



www.facebook.com/bamf.socialmedia



[@BAMF_Dialog](https://twitter.com/BAMF_Dialog)

www.bamf.de

OTHER LANGUAGE ?

www.bamf.de/publikationen

