

European Migration Network

Reliable and comparable
information on migration



Funded by
the European Union



What is the EMN?

The European Migration Network (EMN) provides up-to-date, objective, reliable and comparable information on **migration** and **asylum** of third-country nationals and to support policymaking in the European Union, its Member States, as well as Observer Countries.

The EMN provides significant value in its role facilitating information-sharing amongst its member countries. Knowledge sharing between and across the network allows EMN Members to stay continuously up-to-date on topics such as the latest developments in the fields of:



legal
migration



international
protection



minors and
vulnerable groups



integration



citizenship and
statelessness



borders, visa and
Schengen governance



irregular migration
including smuggling



return and
readmission



trafficking in
human beings



migration and
development
cooperation

Who is involved?

The EMN, which was established in 2008 is a Europe-wide network consisting of 33 National Contact Points (NCPs) in the EMN Member (EU Member States except Denmark) and Observer Countries (Norway, Georgia, Moldova, Ukraine, Montenegro, Armenia and Serbia), the European Commission (DG Migration and Home Affairs) and the EMN Service Provider (ICF). Each NCP is appointed by their national government, primarily from Ministries of Interior and of Justice, specialised government agencies dealing with migration, international protection, reception and/or citizenship issues plus universities, research institutes and country offices of the International Organization for Migration (IOM). The European Commission coordinates the EMN, assisted by the EMN Service Provider.

A multi-level network:

EU level

EMN NCPs gather regularly to coordinate with other EU level agencies and institutions such as the European Parliament, the statistical office of the European Union (Eurostat), the European Union Asylum Agency (EUAA), the Knowledge Centre on Migration and Demography (KCMD), the European Border and Coast Guard Agency (Frontex) and the Fundamental Rights Agency (FRA). The EMN also collaborates with the Organisation for Economic Co-operation and Development (OECD), the World Bank, the IOM, as well as with several NGOs, such as the International Committee of the Red Cross (ICRC), Save the Children, and Missing Children Europe.

National level

Each EMN NCP develops a national-level network involving local partners with expertise in migration and asylum from a wide stakeholder group, e.g. from the government, the (academic) research community, and NGOs.

EMN Steering Board

The EMN Steering Board, chaired by the European Commission and consisting of one representative from each EMN Member Country (EU Member States except Denmark), provides strategic guidance on the EMN's activities. EMN observers and partners may be invited to attend EMN Steering Board meetings.

How is the EMN funded?

The EMN is funded by the European Commission through the Migration and Integration Fund (AMIF). Budget is allocated to support EMN NCPs in EU Member States who are co-financed from national funds. EMN NCPs located in non-EU countries sponsor EMN activities from their own national budget.

EMN publications

The EMN produces several publications, based on inputs from EMN National Contact Points, available to the wider public. The topics of these publications are decided between EMN NCPs and the European Commission in the framework of an annual work programme based on EU priorities.

Annual Report on Migration and Asylum

The EMN produces [Annual Reports on Migration and Asylum](#), which outline the most significant political and legislative developments related to migration and international protection.

Ad-hoc queries

[Ad-hoc queries](#) collect information from EMN NCPs, at the request of any Member or Observer Country of the EMN or the European Commission. The network produces compilations and summaries of the responses to Ad-hoc queries, which rapidly assess, generally within 4 weeks

or less, the perspective of responding States in relation to a wide range of asylum and migration-related issues, e.g. legal migration, international protection, irregular migration, return, visas etc. The aim of the Ad-hoc queries is to provide answers to the EU and national Policymakers to a short and precise query.



Studies

The EMN produces studies on specific migration and asylum topics relevant to policymakers at national and EU levels, to meet both long- and short-term needs.

In 2023 and 2024 the EMN will carry out these studies:

- Integration of international protection applicants in the labour market
- The application of the Temporary Protection Directive: challenges and good practices in 2023
- Illegal employment of third-country nationals: 2017-2022 situation analysis

Each EMN study consists of national reports produced by EMN NCPs, and a comparative EU level report developed by the EMN Service Provider to analyse the main findings from the national reports and to set these within the EU and Observer Countries context. To facilitate access to and understanding and uptake of EMN studies, each is accompanied by a one-page '[flash report](#)' highlighting the main takeaways from each study and by an '[EMN inform](#)' with the study's executive summary.

Inform

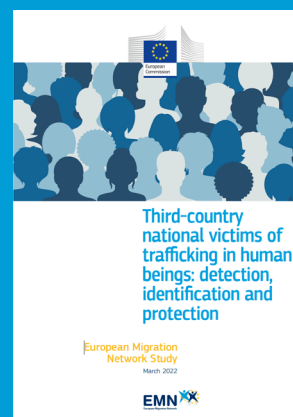
[EMN informs](#) are short publications on a focused topic that synthesise and summarise key findings from EMN reports, studies or ad-hoc queries. In 2023 the EMN is expected to publish ten informs.

Country Factsheets

Drawing on information collected and analysed from the Annual Report on Migration and Asylum, the [EMN country factsheets](#) provide succinct summaries of the main developments in the year in EMN Member Countries, as well as the most recent available migration and international protection statistics.

The EMN's key strength is to compare, synthesise, summarise and share data and information collected at national and EU levels in accessible and comparable formats.

2022 EMN studies:



EMN Quarterly

[EMN quarterly newsletters](#) provide up-to-date and topical information for policymakers on a quarterly basis.

The newsletters highlight recent EU and national developments, relevant information extracted from the EMN's existing knowledge, and the latest published statistics on migration in Member Countries, primarily from [Eurostat](#).

EMN Glossary

The [EMN glossary](#) on asylum and migration improves understanding and comparability by enabling a common use of terms and definitions relating to asylum and migration. The terms presented are those recommended for official use by each EMN NCP. For its definitions and references, the Glossary draws on a variety of sources, primarily those given in the EU asylum and immigration acquis. The terms are available in all EU Member State languages (excluding Danish and including Norwegian and Georgian). The latest version of the Glossary is accessible on the EMN [website](#) and is also available for download as a mobile app in English, Finnish, German, Greek, Italian and Latvian for [Android](#) and [iOS](#) users.

EMN Expert Groups

To deal with the relevant issues on migration and asylum at the national or European level, the EMN Steering Board has established several expert groups:

- The EMN Return Expert Group (REG) functions as a platform for practical cooperation and the sharing of expertise. All EMN REG initiatives contribute to work on return-related matters at the EU level.
- The working group on information and awareness-raising activities in the framework of the EU migration policy supports preventing migrant smuggling and reducing irregular migration flows to the EU by facilitating knowledge exchange and coordination among EU Member States, EU bodies and external experts.
- The EMN Platform on Statelessness functions to raise awareness in regard to statelessness and to bring all the relevant stakeholders in the field together. The main activities of this working group are data collection and analysis, public events, and capacity building initiatives.

Each working and expert group defines its own objectives, priorities and working modalities.



EMN EU-level Conferences

EMN Presidency Conferences

EMN Presidency Conferences are so named because they are linked to the EU Presidency and are organised by the EMN NCP of the EU Member State holding the current EU Presidency, which rotates every six months. The EMN Presidency Conferences are public, high-level thematic events targeting Policymakers, academia, practitioners, and wider audiences.

The aim of this Presidency Conference was to share knowledge, experience and views among EU Member States and institutions, international organisations and third countries on challenges and solutions to promote assisted voluntary return, as an opportunity for the returnees rather than a failing migration experience.



French Presidency Conference

Assisted voluntary return and reintegration: strategy of EU Member States and European coordination



Czech Presidency Conference

EU and Labour Migration: Needs, Strategies and Challenges

The main topics were:

- Policies and strategies to increase the quality of the support provided to returnees
- Operational coordination among EU Member States, European Commission, Frontex and third countries
- Challenges and practices in promoting voluntary return and strategies to boost the sustainability of the reintegration

With the intention of fostering exchange of information, awareness and good practice to address labour migration in the present and future, the Czech Presidency Conference mainly focused on:

- Promotion of the EU Talent Pool: An EU-wide job matching platform for nationals of non-EU countries
- Attracting skills and talents to address EU labour shortages
- Policies and strategies to identify migrant needs to promote inclusion and long-term well-being
- Impact of refugees fleeing Ukraine in the EU market

Annual Report on Migration and Asylum Launch Event

Each year the EMN holds an annual conference, to launch its Annual Report on Migration and Asylum and to address topical migration and asylum issues.

EMN Roundtables

EMN roundtable events seek to be a forum for out-of-the-box thinking, where leaders and innovative practitioners from inside and outside the EMN come together to foster policy-relevant and innovative thinking, open discussions and critical reflections on migration related topics.

EMN Member and Observer Countries

EMN Member States:

Austria	France	Malta
Belgium	Germany	The Neatherlands
Bulgaria	Greece	Poland
Croatia	Hungary	Portugal
Cyprus	Ireland	Romania
Czechia	Italy	Slovakia
Denmark	Latvia	Slovenia
Estonia	Lithuania	Spain
Finland	Luxembourg	Sweden

Observer Countries:

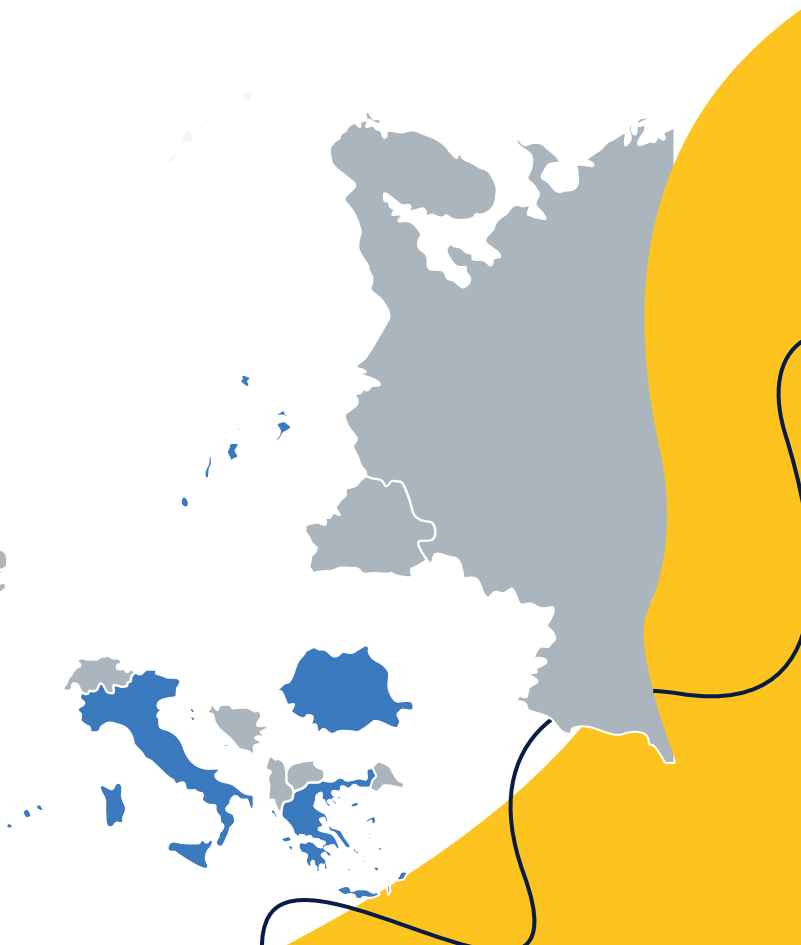
Norway	Montenegro
Georgia	Armenia
Moldova	Serbia
Ukraine	

EMN National Conferences

Each EMN NCP organises annual national conferences to disseminate findings and results of the EMN studies or other products at national level, addressing issues and relevant topics for national audiences

Destination Europe

[Destination Europe](#) is an interactive learning and training tool about migration and integration, simulates migration scenarios and stimulates discussion about migration in Europe.



Follow us



www.ec.europa.eu/emn



[@european-migration-network](https://www.linkedin.com/company/european-migration-network)



twitter.com/EMNMigration



[@EMNMigration](https://www.youtube.com/@EMNMigration)